



EcoTerra TECHNOLOGIE

**METEN**  
stein+design



**7 JAAR**

*ontwikkeling...*

*„Sinds honderden jaren wordt beton uit  
cement, water en grind gemaakt.  
En bij deze **ALOUDE RECEPTUUR**  
hebben wij ons de kernvraag gesteld.“*

DR. MICHAEL METTEN





**WAAROM?**



A dark, industrial interior, possibly a warehouse or storage facility. The ceiling is made of corrugated metal with several overhead lights. In the foreground, there are rows of metal shelving units or racks. The lighting is dim, creating a moody atmosphere.

**WIJ**  
*hebben...*



**NIEUWE**

*wegen gezocht...*





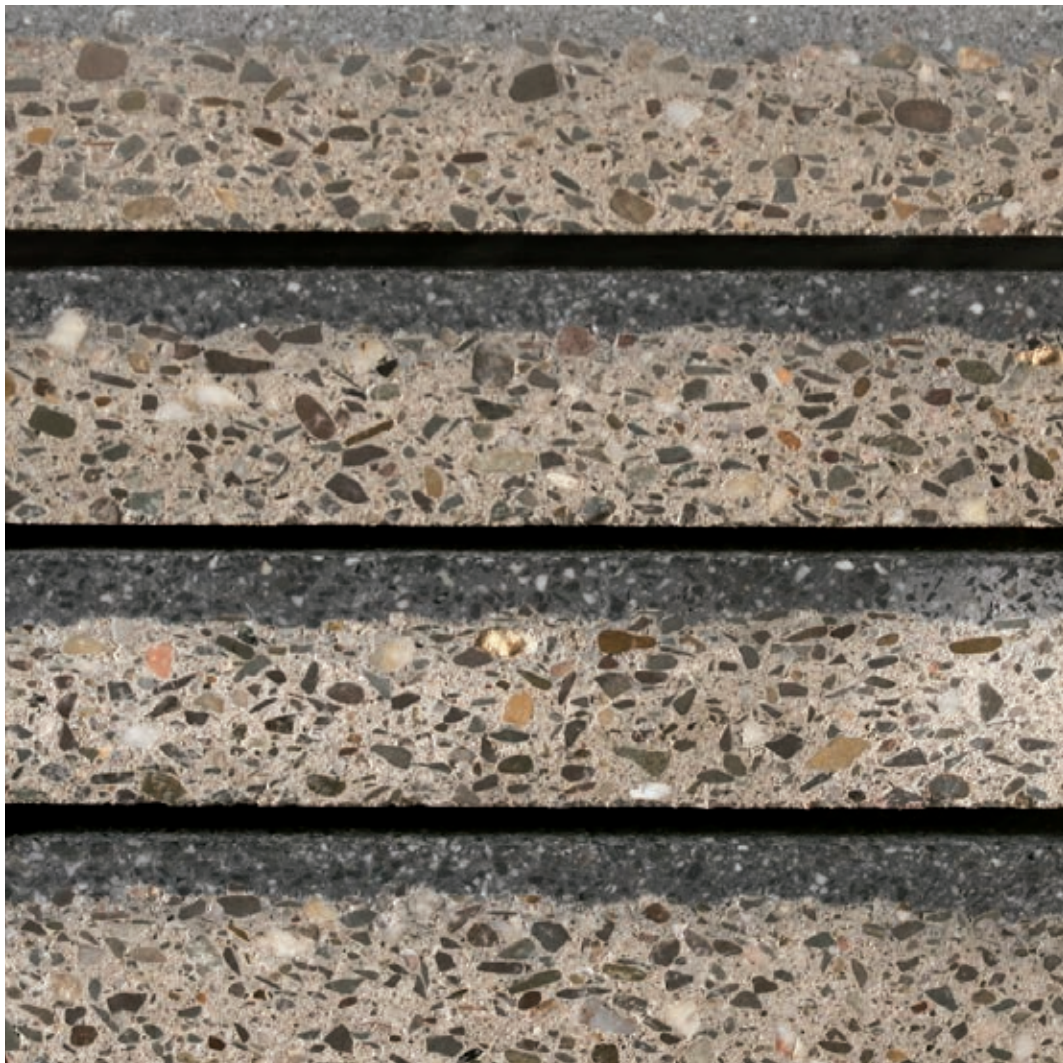




*Om stenen*

**ZONDER CEMENT**

*te kunnen maken...*



*„Met deze stap is het ons gelukt  
het **CEMENT** in de toplaag van  
de betonsteen te **VERVANGEN**.“*

DR. MICHAEL METTEN



*Wat op deze stap volgde  
is te zien op video:  
[metten.nl/ecoterra](https://metten.nl/ecoterra)*





**DIT OPPERVLAK**

*neemt minder vuil op!*

A person wearing a red jacket is shown from the chest down, leaning over a wooden workbench. They are working with two rectangular concrete blocks. The background is a dark, solid color. The text "En de kleur is" is written in a white, italicized serif font, and "BLIJVEND!" is written in a large, bold, white sans-serif font below it.

*En de kleur is*  
**BLIJVEND!**







*Kalkuitbloeiing*

**BEHOORT TOT**



**HET VERLEDEN!**



*En het betekent*  
**15%**



**MINDER CO<sub>2</sub>**

*per vierkante meter!*

A large, dark, textured rock formation, possibly a piece of recycled material, is shown against a black background. The rock has a rough, layered appearance with various shades of grey and black. The lighting highlights the texture and edges of the rock.

*Deze*

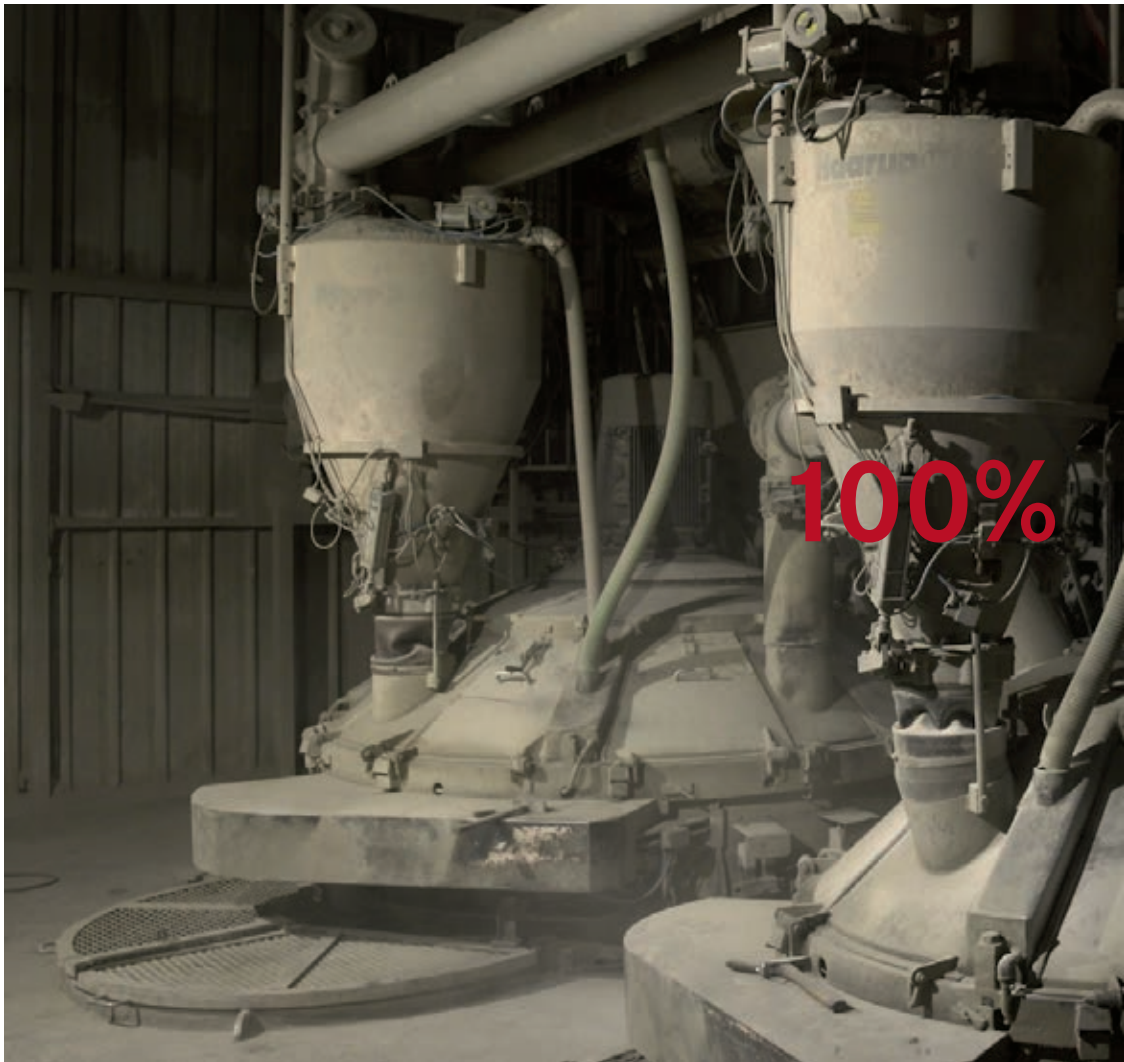
**BESPAART**

*door gerecycled materiaal!*



*steen*

**GRONDSTOFFEN**



100%



The image shows a dark, industrial environment with various pieces of machinery, pipes, and hoses. A prominent feature is a large, vertical, cylindrical component with a corrugated section. In the foreground, there's a large, flat, circular object, possibly a lid or a part of a machine. The overall lighting is dim, creating a moody atmosphere. Overlaid on this scene is text in two styles: a white italicized serif font and a large, bold, red sans-serif font.

*De productie ervan is*  
**KLIMAATNEUTRAAL!**

A photograph of an industrial facility. On the left, there is a large metal structure with two large funnels, possibly a hopper or part of a production line. To the right, a tall metal rack holds several layers of metal parts, some of which are labeled with numbers like '505', '506', and '507'. The background shows a large, light-colored metal building. The overall scene is industrial and well-lit.

*En dit*  
**VOOR**

TECHNOLOGIE  
**EcoTerra**



*is een nieuwe richting*

**DE TOEKOMST!**



Onze innovatie  
EcoTerra®-Technologie



GERMAN  
DESIGN  
AWARD  
NOMINEE  
2021

## EIGENSCHAPPEN

// Samtiert® oppervlak.

// Vrij van kalkuitbloeiing.

// Gereduceerde vuilopname.

// Kleurvast oppervlak.

// Andersoortige grondstof geeft een CO<sub>2</sub> vermindering van 15 % per m<sup>2</sup>.

// Klimaatneutrale productie.

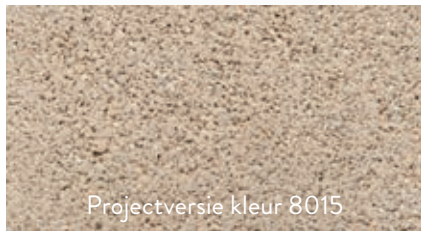
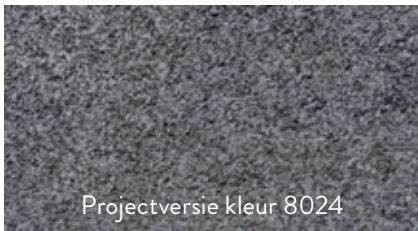
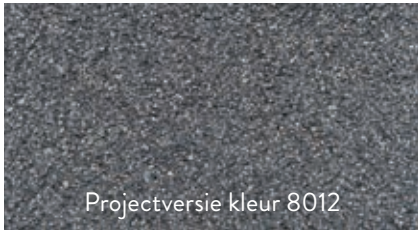
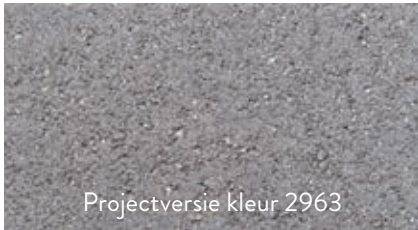
// Milieu besparend:  
hergebruik van grondstof o.a. uit gerecycled materiaal.

// Voor patent aangemeld.

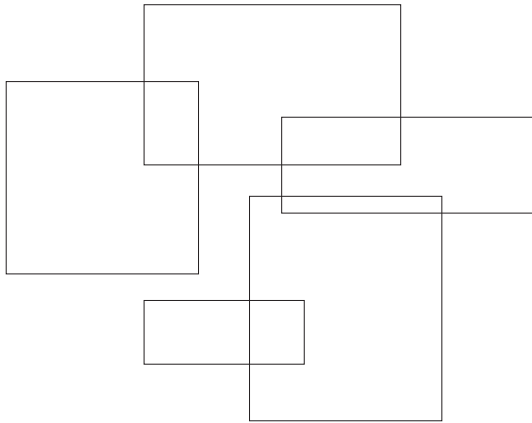
**CLEANTOP**  
PROTECTED



# KLEUREN



## FORMATEN



Een overzicht van het complete aanbod van formaten vindt u onder  
**[metten.nl/ecoterra](https://metten.nl/ecoterra)**

## METTEN PRODUCT CONFIGURATOR

Stel uw eigen steen samen of vindt snel een passend  
product voor uw project:  
**[metten-edities.nl](https://metten-edities.nl)**

**METTEN**

stein+design

Doejenburg 14 · 4024HE ECK EN WIEL

Tel. +31344661764

[www.metten.nl](http://www.metten.nl)